

Port-X

in desk power module

USER

MANUAL



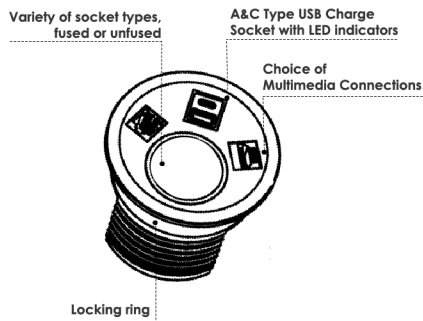
SCAN ME



www.abl-ltd.com

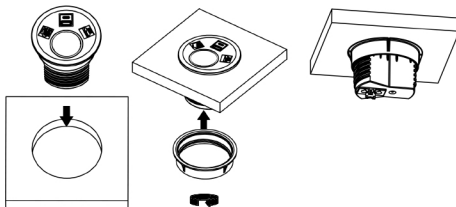


Thank you for purchasing ABL's Port-X power module. Port-X has been manufactured and tested in accordance with relevant standards (see contact page).



INSTALLATION:

Ensure that there is a sufficient clearance, 150mm bellow surface and 30mm between the cut-out edge and the edge of the work surface.



Step 1. Place the module in the desk cut-out.

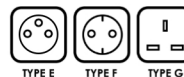
Step 2. Whilst twisting the locking ring, set the module orientation.

Step 3. Connect the mains lead with the 3 Pole Connector.

MAIN FEATURES:

- The module is available in Black, White or Grey
- Available configurations: one socket, one smart charge and up to two media connections.
- Rated voltage of Port-X power module unit is 250V AC (**C, E, F, G, J, L**), for **B type sockets** 120V AC
- Nominal intensity of the unit:
 - 13A for **G type socket**
 - 16A for **B, C, E, F, J, L type sockets**
- G type sockets are individually fused with 3.15A or 5A fuse to comply with BS6396
- Fit into a 80 mm port hole, and desk thickness between 15 and 45 mm
- Locking ring enables quick installation and fitting with no effort

Note: The most common socket types:



Contact us for more information.

SAFETY NOTES:

- Items such as Vacuum Cleaners, Kettles, Coffee Makers, and Fan Heaters should not be connected via these power modules
- Installation is to be carried out by a qualified professional



Complies with BS 5733 (UK)
IEC 60884-1 and IEC 60884-2-7 (Europe)



Kitemark certified on 13A Plugs and Socket outlets
(KM686563)



Manufacturing in-house within central
Europe under strict compliance with
ISO 9001:2015

CONTACT US

UK DISTRIBUTION CENTRE

Unit A6 Brooklands
Technology Park
Sywell
Northants NN6 0BN
United Kingdom

+44 (0) 1933 400 080

EMEA DISTRIBUTION CENTRE

Lava Tolstaja 25
32000 Cacak
Serbia

+381 (0) 32 420 100

sales@abl-ltd.com

www.abl-ltd.com

CONTENTS:

- **Port-X
power module**



x 1

Note: Use mains lead cable to connect Port-X
power module with the main power supply

MAINTENANCE:

Do not open, disassemble, change, or modify the
device. Every unauthorized opening or repairing of the
device leads to loss of warranty.

During device usage, you need to follow basic safety
measures. since safety requirements vary, please
check with local laws.

WARRANTY CONDITIONS:

ABL warrants this product as free of defects in material,
design, and workmanship for the period of twenty-four
(24) months from the original date of receipt of the
product, unless applicable national laws stipulate
otherwise.

If during the period of warranty this product proves
defective under normal use and service you should
return the product to the retailer from whom it was
originally purchased. The liability of the ABL is limited to
the cost of repair and/or replacement of the unit
under warranty. The warranty is void if a failure occurs
due to the following reasons:

- Improper device installation
- Improper handling
- Improper transport
- Force majeure



**WARNING: Do not use this product for any other
purpose other than which it was designed for.**

